

Largs North Kindergarten

21 Kybunga Terrace, Largs North 5016

Phone: 8248 1353

www.largsnthkgn.sa.edu.au

Enquiries: dl.5628.leaders@schools.sa.edu.au

Enrolment Booklet



Government of South Australia
Department for Education

CONTENTS

<i>Welcome</i>	3
<i>Term Dates</i>	3
<i>Educators</i>	3
<i>Philosophy Statement</i>	4
<i>What is a Kindergarten</i>	4
<i>Assessment of Learning</i>	5
<i>Kindergarten fees</i>	5
<i>Our Learning Programme</i>	6
<i>Flow of the Day</i>	7
<i>Session Times</i>	7
<i>Your Child will need to bring to kindy</i>	8
<i>What to wear to kindy</i>	8
<i>Money</i>	9
<i>Governing Council</i>	9
<i>Family Information Pocket</i>	9
<i>Volunteer Screening</i>	9
<i>Birthday</i>	10
<i>Take Home Packs</i>	10
<i>Additional Services</i>	10
<i>Special Toys</i>	11
<i>Site Policy and Procedures</i>	11
<i>Emergency Procedure</i>	11
<i>Family Feedback</i>	11
<i>Concerns and Complaints</i>	12
<i>Playgroup</i>	12

WELCOME

Welcome. At Largs North Kindergarten we understand that you, as parents and carers, are the first and most important educators of your child. We encourage you to become involved in our program, in order to help make your child's transition from home to Kindergarten a little easier.

We hope this booklet will provide you with the answers to many of the questions you may have. Should you still have some questions, please feel free to visit the site or contact us by phone.

We look forward to working with you throughout the year.

Largs North Kindergarten Educator Team



TERM DATES 2026

Term 1 27 January - 10 April
Term 2 27 April - 3 July
Term 3 20 July - 25 September
Term 4 12 October - 11 December

TERM DATES 2027

Term 1 27 January - 9 April
Term 2 26 April - 2 July
Term 3 19 July - 24 September
Term 4 11 October to 10 December

EDUCATORS

At our site we currently have a Director/teacher, three Teachers and three Early Childhood Workers. We work together to plan the program, keeping in mind each child's interests, level of development and special rights. Amy, Jenna, Katrina and Louise are trained Early Childhood Teachers who have chosen to specialise in children's education, from 0-8years of age. Jenna, Katrina and Louise work part time across the week. Amy works full time. Katy, Wendy and Nicole are our highly skilled ECWs. They work across the week supporting children in their learning.



Amy



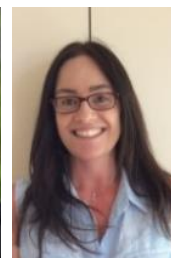
Jenna



Jess



Louise



Katy



Nicole



Wendy

PHILOSOPHY STATEMENT

At Largs North Kindergarten we strive to create a welcoming and engaging learning environment where we celebrate the diversity and individuality of each child nurturing their development, growth and learning. The wellbeing of each child is our priority.

We take pride in our community and endeavour to form and foster meaningful relationships between children, educators and families. We promote children's understanding of rights and responsibilities as active citizens in both local and global communities. We show care and respect to our natural world including being strong advocates for sustainability and conservationist for our local beach and wildlife.

We believe children learn best through play and start their kindergarten journey with a wealth of knowledge and ideas about the world. We empower the children to have a genuine voice as competent and capable learners and we work collaboratively and passionately with them to encourage their ideas, theories and wonders whilst embracing their sense of self.

WHAT IS A KINDERGARTEN



A Kindergarten is a learning place where children come together in a friendly, inviting and stimulating environment. They are helped to learn by people who understand and care. We reflect, value and respect the children's diverse backgrounds.

At Largs North Kindergarten we support your child's development physically, emotionally, socially and cognitively. That is why we provide a variety of types of play - to cater for each individual child's developmental needs and learning style.

The primary focus of this Kindergarten is to provide age appropriate educational programmes that maximise each child's potential development. We believe that children learn best through play that involves them in hands-on, active learning experiences. We are also a community facility, in which families and educators work as partners to provide the highest quality education for the children in our care.

A Kindergarten day is a busy day, with children self-selecting materials and experiences according to their interests and developmental stage. Our programme includes both free and guided experiences, as these are the main ways by which young children learn about themselves, other people and the world around them. We also provide quiet areas for children to relax and rest.

Each day we have extended play, both indoors and outdoors. Our experiences are always changing and developing, with some core activities providing continuity for our learners. We come together each session for guided learning in small and large groups. Intentional teaching sessions include our music and movement times, games, group learning discussions for our Project work and storytelling.

ASSESSMENT OF LEARNING

At Largs North Kindergarten we encourage strong relationships with our families. We share information informally with families on a regular basis. We also meet formally before your child starts Kindergarten and also in their first and second term, to discuss their progress and development.

In the second term meeting, we share goals related to each child's learning for the remainder of the year based on Individual Learning Plans. These family discussions center on the areas of social, emotional, physical, speech and cognitive development.

All children have a Learning Folder that contains Learning Stories, work samples, annotated photographs and memories of their time at kindy. Children and families have access to these and this supports families and educators to work on each child's individual needs.

Your child main cohort educator will write a Statement of Learning which you will receive at the end of your child's kindergarten year. A copy of this is also sent to the school they will be attending. The Learning Folder is yours to keep, but we strongly recommend that you share it with your child's Reception teacher as evidence of their learning at Kindergarten.



KINDERGARTEN FEES

The Government provides an Operating Grant which is budgeted to provide equipment for all areas of the curriculum. Parent contributions are needed to supplement the grant. These contributions are used to purchase equipment and consumables, such as paper, paint, collage materials and cooking ingredients. They also help subsidise the number of support staff in our site.

The yearly contribution for one child is \$680. This can be paid in full or, alternatively instalments are available, we invoice half the amount twice per year.

Fee notices will be provided via your child's family information pocket, two weeks into Terms 1 and 3. We accept cash, EFTPOS (see an educator) or electronic transfer (details on account). Families are invited to discuss any financial difficulty with the Director, with negotiated payment plans being at her discretion. Please see the Director if you require any further information.

Cash fees are paid into the money box in the foyer; receipts are placed into the children's family information pockets.

OUR LEARNING PROGRAM

Our curriculum is based on the national Early Years Learning Framework, *Belonging, Being and Becoming*. The five learning outcomes are designed to capture the complex learning and development of all children across the birth to five years age range. These are:

- Children have a strong sense of identity
- Children are connected to and contribute to their world
- Children have a strong sense of wellbeing
- Children are confident and involved learners
- Children are effective communicators.

The curriculum emerges through interest and experiences, and social interaction between peers and adults. Educators reflect on the interests and development of the children and use this understanding to plan their programmes, facilitating rather than directing the learning process. Children are empowered to have genuine voice and choice in both their learning and the learning environment.

Our Kindergarten learning environment promotes creativity, discovery and risk-taking through play. We believe that children learn best through play that intrinsically engages them in hands-on, real life, active experiences. We provide beautiful, dynamic materials that are invitations to learn, through both solitary and social play.

We are fortunate to have the beach as a resource close to the Kindergarten. Consequently children regularly enjoy beach kindy sessions within a small group.

We see children as competent and capable learners who come to Kindergarten with a wealth of knowledge and ideas about the world.



THE FLOW OF THE DAY

Times (approx)	
8:45 am	<u>Morning Session Begins</u> Children arrive, wash their hands, pack away bags, sign-in (sign-in sheets on veranda Welcome Table), families say their goodbyes and children start their play
9:15 am	<u>Morning Meeting</u> This time is for notices and sharing of information <u>Morning Small Gathering</u> Break into small groups for our Phonological Awareness Learning, sunscreen after during Terms 1,3 and 4
9:45 - 11:30 am	<u>Suggested Morning Snack and Indoor and Outdoor Play</u> Children are encouraged to explore learning through play experiences. During this time we suggest children have their snack, however it is a choice
11:30 - 12:00pm	<u>Midday Gathering</u> This time is for learning together.
11:45 am	<u>End of Morning Session/Afternoon Session Begins</u> Morning session ends and afternoon children arrive, wash hands, pack away bag, sign in and join midday gathering.
12:00pm	<u>Lunch</u> Typically outdoors on mat (weather permitting), we ask children to sit and eat together, this eating time is strongly suggested, sunscreen after during Terms 1,3 and 4
12:15 - 2:30 pm	<u>Indoor and Outdoor Play</u> Children are encouraged to explore learning through play experiences.
1:30 pm	<u>Suggested Afternoon Snack/Prepare for Home</u> During this time we suggest children have their snack, however it is a choice. Children are encouraged and supported to pack their belongs ready for home.
2:15 pm	<u>Re-Set</u> Children are encouraged to help re-set the kindergarten environments ready for home time.
2:30 pm	<u>Afternoon Group Gathering</u> This time is for learning together and concluding the days events.
2:45 pm	<u>Afternoon session ends</u> We farewell children from the mat as we see their families.
If a child is collected before group time please ensure an adult signs the child out in the diary which is kept on the welcome table under the back verandah and also informs a educator upon departure.	

SESSION TIMES

MORNING - 8.45 am - 11.45 am (Mon - Thurs)

AFTERNOON - 11.45 am - 2.45 pm (Mon -Thurs)

Children who come for the afternoon session at 11.45 am will join us for lunch.

As part of the Universal Access to Kindergarten Initiative, children are entitled to attend a total of 15 hours each week. At our site we offer this in the format of 5 x 3 hour sessions. To cater to the different needs of our families, a number of options are offered at our site to enable people to access up to 5 sessions - half a day = 1 session. You may choose to have 2 full days and one half day; one full day and three half days; or some of our families prefer to access less than the 15 hours, choosing 4 mornings or 4 afternoons. We have a capacity of 40 children in the site at any time, so we negotiate with families on full and half days to ensure we do not exceed our capacity.

All children are farewelled by an educator individually, usually from a group situation.

YOUR CHILD WILL NEED TO BRING TO KINDY

- A Kindy Bag
- A wide brimmed hat
- Snacks and/or lunch
- Water bottle
- A spare set of clothes (appropriate to the weather conditions)

Please make sure all these items are clearly marked with your child's name.



A snack such as fruit, cheese, dried fruit, raw vegetables or yoghurt. We encourage healthy eating habits in accordance with Departmental and site Policies. Children who stay for a full day will need to bring their own lunch and two snacks.

We encourage children to bring a water bottle. Water is always available for children to refill their bottles. This water is filled from the Puratap in the Kindergarten kitchen. Water is the best drink for active, growing bodies, please DO NOT send juice or cordial in water bottles.

Guidelines of interest: Aust. Govt. 'Get Up and Go' Healthy Eating and Physical Activity for Early Childhood and Dietary guidelines for Children and Adolescents in Aust.

WHAT TO WEAR TO KINDY

It is important that children feel comfortably dressed for play. Old clothes are just right for jumping, running, digging, exploring, painting and getting messy. Bare feet are often best for outside play, so please ensure your child's footwear is easy to take off and put back on. Thongs do not provide protection from the bark chips in our yard and are very difficult to run and climb in. Please avoid singlets, strappy dresses and tops to support Sun Safe practices (See site policy).

Please ensure a spare set of clothes in your child's bag.

Lost property is kept in a basket on the verandah, please check this regularly.

Please apply sunscreen to your child before their sessions. When the UV rating is over 3, in accordance with our Sun Safe policy, children who are staying at kindy for a full day will re-apply sunscreen mid morning and at lunch as a regular routine.

MONEY

From time to time it may be necessary for you to send money to Kindergarten for fees and excursions. Please place money in a clearly marked envelope (including your child's name, what it is for and the amount enclosed) and place it in the money box in the foyer. Your receipt will be placed in your child's name pocket.

GOVERNING COUNCIL

The Governing Council consists of parents and educators who collaboratively make decisions surrounding facilities, financial and educational outcomes. The Governing Council meets twice each term in the evenings. An Annual General Meeting is held during term one annually and parents associated with any service we offer (e.g. Playgroup) can be a member. Specific roles within the Council are available. For further information, or other queries please enquire with an educator.

FAMILY INFORMATION POCKET

Each child has a family information pocket in the foyer. Please check it regularly for newsletters, invoices, receipts and other information. We also communicate via electronic means if it's possible to do so.

VOLUNTEER SCREENING



A criminal history screening is no longer required for volunteers (Jan 2016), however, a volunteer RRHAN-EC (online course) will need to be completed.

We consider our families to be a vital part of our program. Throughout the year we offer many ways for you to become involved in your child's education. Largs North Kindergarten has a strong history of excellent parent and community support. The site was built by the Largs North Progress Association in the 1950s for the community.

We welcome you to come and spend some time at the Kindergarten, being involved in your child's learning and sharing any special skills, such as cooking, art, music, dance, sewing gardening etc.

Due to child: adult ratios we seek the assistance of families during excursions such as beach kindy. Helpers have provided very positive feedback about their own enjoyment of our trips out and about. These events are planned on different days to ensure fairness for children attending different sessions.



BIRTHDAYS

Children enjoy celebrating their birthdays with their Kindergarten friends. Due to food allergies we have made a decision to celebrate with the birthday song, sticker, our special birthday hat and a card.

TAKE HOME PACKS

We have a collection of packs that the children can borrow and take home. Each child can borrow one pack at a time and we ask that the pack is returned before borrowing another pack. If pieces are missing please let us know as we aim to keep them well maintained.

ADDITIONAL SERVICES

The kindergarten has access to

- Speech Pathologists
- Child Psychologists
- Bilingual Assistants

Through regional Support Services, based at Flinders Park Office. When children are identified as having additional needs, by educators and through family discussions, we are able to refer them for assessment and to have access to these specialists.

We can also help you access the school dentist, Child and Youth Health and other services as needs arise.

Please note that our educators are not able to assess or diagnose children as having additional rights as this is not within our range of expertise.

SPECIAL TOYS

Sometimes children need the comfort of a favourite toy whilst they are transitioning into kindergarten. We support this, however we do not encourage other toys that can become lost or broken as this can be traumatic for children.

We do welcome treasures found, such as shells, nests, rocks etc.

SITE POLICIES AND PROCEDURES

Hard copies of the Nutrition Policy and Sun Safe Policy are provided in our information pack, for you to keep.

To view other policies please refer to the policy documents folder on top of the lockers. They can also be viewed on our website. www.largsnthkgn.sa.edu.au

EMERGENCY PROCEDURES

Signs are displayed around the site.

While at the site and in the event of an Emergency:

When you hear a whistle continuously blowing, quickly move to the person blowing it.

(That person will be in a safe area).

FAMILY FEEDBACK

We strive to ensure your child and your family have an enjoyable and meaningful kindergarten experience. We therefore encourage and welcome any feedback you may have to help make your journey the best it can be.

Please feel free to speak to or correspond with an educator at any time throughout the year. If you would prefer to provide anonymous feedback you can do so by placing a note in the money box located in the foyer. There is a Department for education survey in term three.





CONCERNS AND COMPLAINTS

- 1 Talk to an educator. If your concern is not resolved after discussions with an educator, discuss your concern with the site manager (Director).
- 2 If the complaint is about the site manager (Director) please approach the Director first, if not resolved - contact the Customer Feedback Unit either by phoning 1800 677 435 or completing a form on <https://online.forms.sa.edu.au/content/forms/af/public/school-complaint.html>
- 3 If your complaint remains unresolved after completing the two steps above an external complaint will need to be completed through the Ombudsman of South Australia.

PLAYGROUP

Largs North Kindergarten Playgroup is co-ordinated by a qualified educator on Friday mornings, from 9:30 am - 11:00 am.

The children have a wonderful time together while caregivers can enjoy some adult conversation and a cup of tea or coffee. The children can enjoy music time and bring a snack to eat before finishing the session. Families/Carers need to stay with their child/children.

Our playgroup charge is \$3 per week to cover the costs of consumables. \$30 prepaid cards are available for purchase at your first session.

